

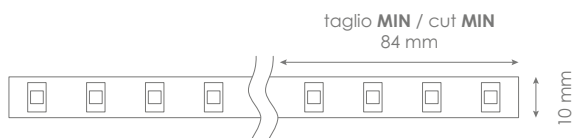
# FLEX - STANDARD 700-4000

## Led Strip



Alimentazione / Operating Voltage	24 V
Potenza / Power	5,5 W/mt
Larghezza Pcb / Width Pcb	10 mm
Altezza / Height Stripe	2 mm
Lunghezza / Length Stripe	5000 mm
Taglio segmento/ Length per Cut	84 mm
N° LED	96 / mt
IP	20
Temperatura esercizio Storage Temperature	- 30° C - + 70°C
Lifetime	L70B20 50000H

	Flusso Luminoso Luminous Flux	Efficienza Efficiency	Colore Luce Led Color
DA-STANDARD-700-4000	770 lm/mt	140 lm/W	4000 K



Via Cadorna, 40/42  
20032 Cormano (MI)  
Tel. +39 02 84269630  
Fax +39 02 84269631  
info@dadalighting.com  
www.dadalighting.com

# FLEX - STANDARD 700-4000

Led Strip

Light efficiency:



Output: 770 lm

Light quality:



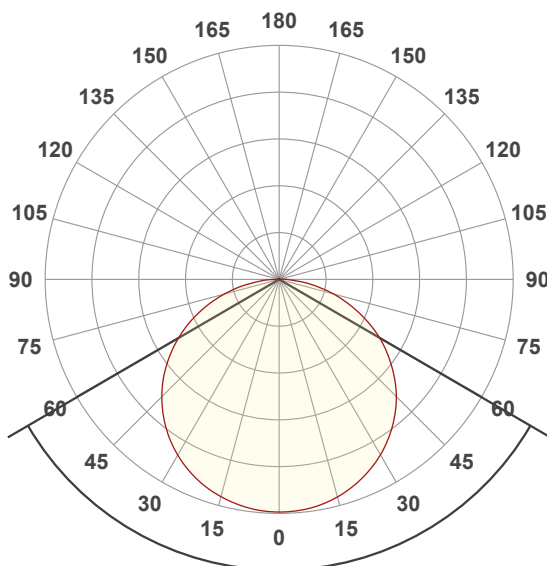
Peak: 245 cd

Color temperature:



Power: 5,5 W

24,0V @ 0,229A



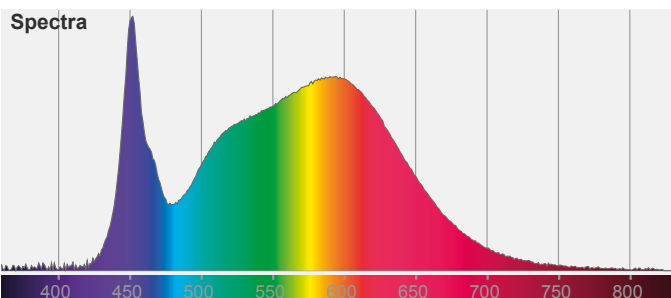
Beam angle

**119,6°**

Color

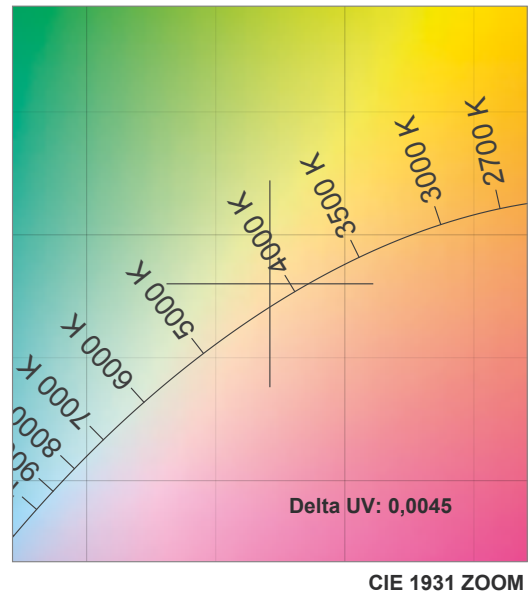
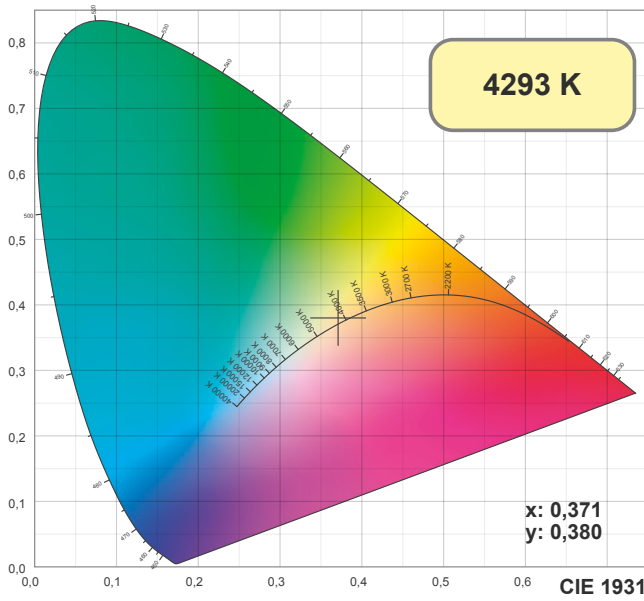


CIE1931  
x: 0,371  
y: 0,380

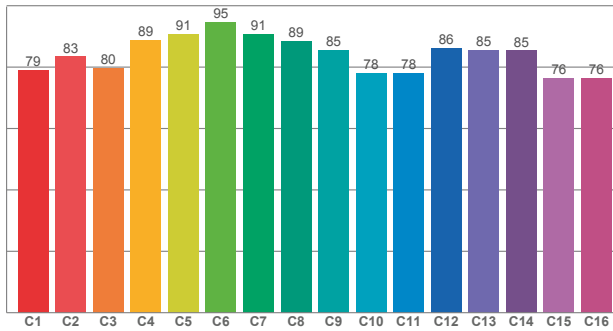


# FLEX - STANDARD 700-4000

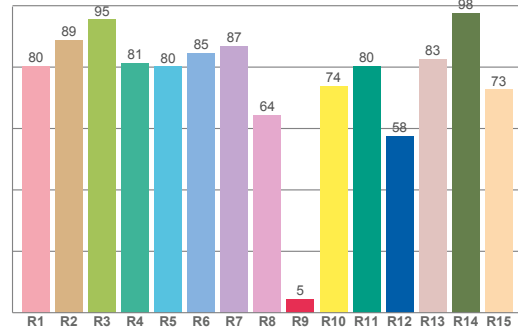
## Led Strip



**TM30: 84,0**



**CRI: 82,8 (R1-R8)**



**CRI R values, only R1-R8 are used to calculate final CRI value**

R1	R2	R3	R4	R5	R6	R7	R8	R9	R10	R11	R12	R13	R14	R15
80,40	88,83	95,47	81,33	80,23	84,59	86,88	64,34	4,54	73,74	80,40	57,55	82,64	97,71	72,70

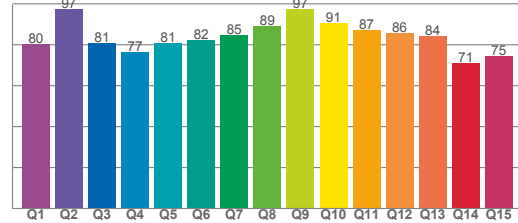
**TM30 C values, 16 binned values out of total of 99 C values**

C1	C2	C3	C4	C5	C6	C7	C8	C9	C10	C11	C12	C13	C14	C15	C16
79,04	83,43	79,76	88,73	90,87	94,73	90,76	88,56	85,48	77,96	77,98	86,32	85,46	85,39	76,36	76,45

**CQS Q values**

Q1	Q2	Q3	Q4	Q5	Q6	Q7	Q8	Q9	Q10	Q11	Q12	Q13	Q14	Q15
80,19	97,40	81,02	76,65	80,77	82,21	84,65	89,30	97,42	90,70	87,40	85,72	84,45	70,95	74,67

**CQS: 82,6**

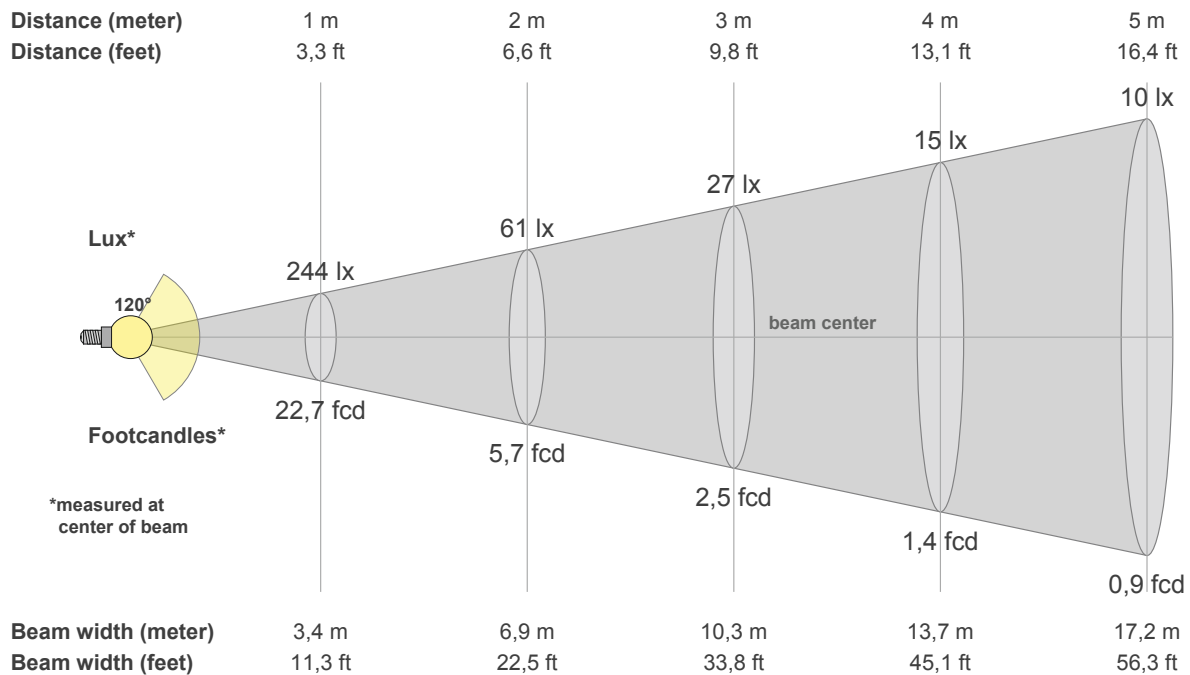


### Color parameters

CCT	CRI	CRI R9	TM30 Rf	TM30 Rg	CQS	x	y	u	v	Duv
4293 K	82,8	4,5	84,0	93,8	82,6	0,4	0,4	0,2	0,3	0,0045

# FLEX - STANDARD 700-4000

## Led Strip



### Intensities in 0° c-plane

0°	5°	10°	15°	20°	25°	30°	35°	40°	45°	50°	55°	60°	65°	70°	75°	80°	85°	90°	95°
244	243	241	237	230	222	213	201	188	174	157	140	121	101	80	59	39	21	8	2
100%	100%	99%	97%	94%	91%	87%	82%	77%	71%	64%	57%	50%	41%	33%	24%	16%	9%	3%	1%

### Intensities in 0° c-plane

0°	5°	10°	15°	20°	25°	30°	35°	40°	45°	50°	55°	60°	65°	70°	75°	80°	85°	90°	95°
244	243	241	237	230	222	213	201	188	174	157	140	121	101	80	59	39	21	8	2
100%	100%	99%	97%	94%	91%	87%	82%	77%	71%	64%	57%	50%	41%	33%	24%	16%	9%	3%	1%

### Intensities in 180° c-plane

0°	5°	10°	15°	20°	25°	30°	35°	40°	45°	50°	55°	60°	65°	70°	75°	80°	85°	90°	95°
244	244	240	236	231	222	213	202	189	174	158	140	121	102	81	60	40	21	8	2
100%	100%	98%	97%	94%	91%	87%	83%	77%	71%	65%	57%	50%	42%	33%	25%	16%	8%	3%	1%

### Intensities in 180° c-plane

0°	5°	10°	15°	20°	25°	30°	35°	40°	45°	50°	55°	60°	65°	70°	75°	80°	85°	90°	95°
244	244	240	236	231	222	213	202	189	174	158	140	121	102	81	60	40	21	8	2
100%	100%	98%	97%	94%	91%	87%	83%	77%	71%	65%	57%	50%	42%	33%	25%	16%	8%	3%	1%

Beam angle 50%	Field angle 10%	Cutoff angle 2,5%	Intensity ratio in 120° cone	Intensity ratio in 90° cone
119,6°	168,0°	182,3°	75,1%	50,1%